

18V 720kHz 2A Fast-PWM Synchronous Step-Down Converter

DESCRIPTION

The MT3552 is a fully integrated high efficiency synchronous step-down converter which requires minimum number of external components. It offers very compact solution with up to 2A continuous output current over a wide input range.

The MT3552 employs proprietary Constant On-Time (COT) control scheme providing superior transient response and maintaining constant switching frequency under the continuous conduction mode operation. The external ramp compensation network allows stable operation with ultra-low equivalent series resistance (ESR) output ceramic capacitors. An internal compensated error amplifier in the control loop provides excellent line and load regulation.

The MT3552 integrates extensive protection functions include: UVLO, OCP, UVP and thermal shutdown. The converter is available in a small 6pin SOT563.

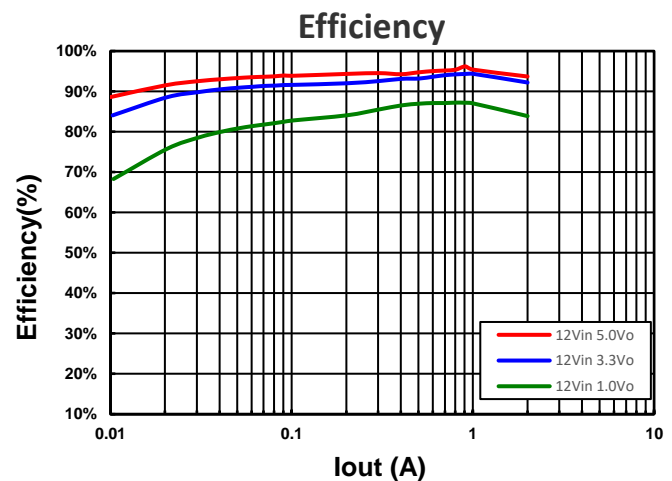
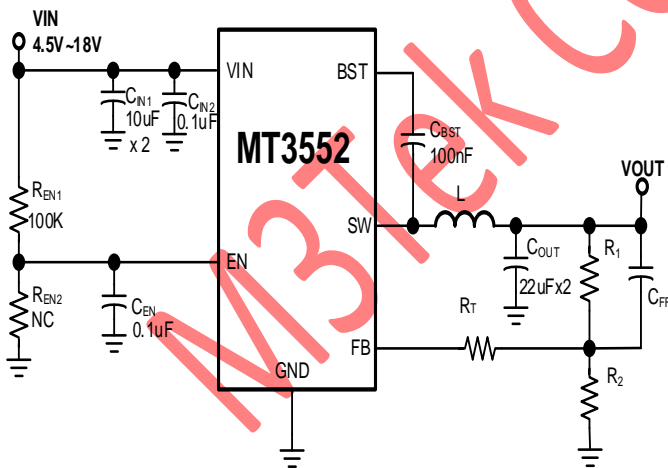
FEATURES

- Input Voltage Range: 4.5V to 18V
- Output Voltage range: 0.804V to 18V
- 2A continuous output current
- Support 100% duty cycle Low Dropout Operation
- Stable operation with low ESR ceramic output capacitors
- Fast PWM COT control with superior transient performance and stable switching frequency.
- 720kHz Switching frequency
- Internal 2ms Soft-start
- Integrated 65mΩ/ 43mΩ HS/LS Power Switches
- Accurate EN UVLO threshold
- High Efficiency Operation at light load MT3552N
- Thermal Shutdown with Auto recovery.
- Hiccup mode short circuit protection
- Available in a 6-pin SOT563 Package

APPLICATIONS

- Laptop Computer
- Tablet PC
- Networking Systems
- Personal Video Recorders
- Flat Panel Television and Monitors
- Distributed Power Systems

TYPICAL APPLICATIONS



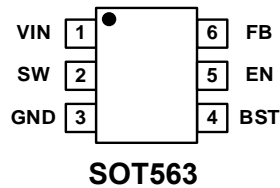
**18V 720kHz 2A Fast-PWM Synchronous Step-Down Converter**

**Ordering Information**

Part No.	Marking	Temp. Range	Package	MOQ
MT3552NSLR (Pulse Skip Mode)	MNYW	-40°C ~+85°C	SOT563	5000/Tape & Reel
MT3552ASLR (Forced-PWM Mode)	MAYW	-40°C ~+85°C	SOT563	5000/Tape & Reel

Note: Y: Year, WW: Week, xx: Manufacture Control Code

**Pin Configuration**



**Pin Description**

Pin Name	Pin NO.	DESCRIPTION
VIN	1	Supply Voltage. The VIN pin supplies power for internal MOSFET and regulator. The MT3552 operates from a 4.5V to 18V input rail. An input capacitor is needed to decouple the input rail.
SW	2	Switch Output. Connect this pin to the inductor and bootstrap capacitor. SW node should be kept small on the PCB for good performance and low EMI.
GND	3	Power ground
BST	4	Bootstrap. A 100nF ceramic capacitor connected between SW and BST pins is required to form a floating supply for the high-side switch driver.
EN	5	Enable pin. MT3552 is shut down when this pin is low and active when this pin is high. The hysteretic enable threshold voltage is 1.21V going up and 1.11V going down. Connect EN with VIN through a pull-up resistor or a resistive voltage divider for automatic startup. An external resistor divider from VIN can be used to program a VIN threshold below to stop the MT3552 operation. There is an internal 1000kΩ (typical) pull down resistor from EN to AGND.
FB	6	Feedback. An external resistor divider from the output to GND, tapped to the FB pin, sets the output voltage